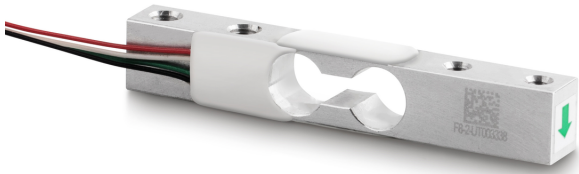


KERN CK 2-0P1

KERN

Miniature load cell made of aluminium



Construction

Design	Miniature bending beam
Dimension (W×D×H)	80×10×12,7 mm
Material	aluminium
Cable length	0,25 m
Mounting - force application	2 × threaded hole M4
Mounting - force dissipation	2 × threaded hole M5

Functions

IP protection - complete device	IP65
---------------------------------	------

Environmental conditions

Use temperature [Min]	-10 °C
Use temperature [Max]	40 °C
Ambient temperature [Min]	-10 °C
Ambient temperature [Max]	40 °C
Storage temperature [Min]	-20 °C
Storage temperature [Max]	65 °C

Packing & Shipping

Readability force [d] (N)	1 d
Dimensions packaging (W×D×H)	145×60×35 mm
Net weight	0,012 kg
Shipping method	Parcel service
Net weight approx.	0,05 kg
Gross weight approx.	0,10 kg
Shipping weight	0,1 kg

Services (optional)

Article number for DAkkS calibration (compressive force)	963-261V
----------------------------------------------------------	----------

Pictograms

STANDARD



OPTION



Category

Brand	Sauter
Product category	Measuring cell
Product group	Load cell
Product family	CK P1

Measuring System

Weighing capacity [Max]	2 kg
Load cell connection	4-wire
Load cell OIML class	C2
Load cell - characteristic value - nominal	1,2 mV/V
Load cell - characteristic value - variance	0,15 mV/V
Load cell - Combined error	0,03%
Load cell - Dead load [Min] (%)	0%
Measuring applications	mass
Load cell - Input resistance - nominal	1055 Ω
Load cell - Output resistance - nominal	1000 Ω
Load cell - Isolation resistance - [Min]	2000 MΩ
Load cell - Recommended excitation voltage [Min]	5 V
Load cell - Recommended excitation voltage [Max]	9 V
Load cell - Input resistance - variance	10 Ω
Load cell - Output resistance - variance	10 Ω
Directions of force	compression

Approval

CE mark	✓
---------	---